

MIT App Inventor Setup Instructions for Windows

Step 1/5: Install aiStarter

1. Download and install aiStarter from http://appinv.us/aisetup_windows


Step 2/5: Install Genymotion

1. Create an account at <https://www.genymotion.com/account/create/> and click on the activation link in the welcome email
2. Download and install Genymotion **with Virtualbox** from <https://www.genymotion.com/download>

Step 3/5: Setup Genymotion

1. Open Genymotion
2. If prompted to add a new virtual device, click on “Yes.” Otherwise, click on “+ Add”
3. Click on “Sign in” and enter your Genymotion account credentials
4. Click on the “Device Model:” dropdown and select **Samsung Galaxy S7**
5. Select Samsung Galaxy S7 from the list of available virtual devices and click on “Next”
6. Click “Finish” once the installation process has finished

Step 4/5: Install MIT AI2 Companion

1. Open Genymotion and start the Samsung Galaxy S7 virtual device
If you get a “CPU is incompatible with virtualization technologies” error, then you need to enable virtualization in your BIOS settings.
2. Download the MIT AI2 Companion from <http://appinv.us/companion>
3. Drag and drop the downloaded .apk file into the Samsung Galaxy S7 virtual device
4. Once the app opens, it will ask for a six character code. Disregard it and simply click on the home button () to close the app

Step 5/5: Launch MIT App Inventor

1. Open aiStarter from your desktop or Windows Start menu (you installed it in Step 1)
2. Open <http://appinventor.mit.edu/test/> and make sure it says that aiStarter is running, as shown in the screenshot below:

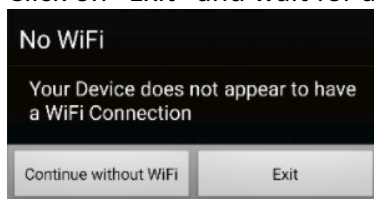
Is aiStarter running?
YES, aiStarter v2.3 running!
Is your phone connected via USB?
NO, your phone is not connected via USB! [Get USB Connection Help](#)

3. Click on “Create” in the top right corner
4. When prompted, sign in with your Google Account
5. Select “Do Not Show Again” from the welcome splash screen and click on “Continue”

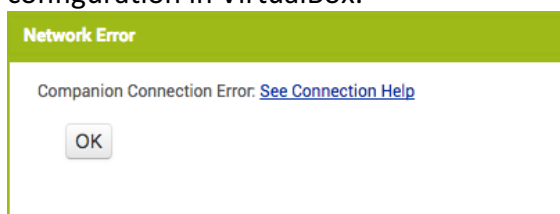
Congratulations – You are now ready to develop Android apps using MIT App Inventor!

Troubleshooting Tips

No WiFi Error: If you get the following error in your Android virtual device when opening the MIT AI2 Companion app, then you opened the app too quickly after Android was loaded. Click on “Exit” and wait for about 20 seconds until WiFi is available in the status bar.



Companion Connection Error: If you get the following error in MIT App Inventor while trying to connect to the MIT AI2 Companion app, then you need to change the network configuration in VirtualBox.



To change the network configuration in VirtualBox:

1. Open VirtualBox and make sure it lists the Samsung Galaxy S7 virtual device in the left navigation pane
2. Select Settings > Network > Adapter 2
3. Set “Attached to:” to “Bridged Adapter” and click on OK.
If the OK button is disabled: Quit Genymotion (if it is running). In VirtualBox Settings select System. Slowly move the slider for “Base Memory” to the left until the OK button becomes enabled. Then select Network > Adapter 2, set “Attached to:” to “Bridged Adapter, and click on OK.